

PORTFOLIO

Pranjal Kucheria

TABLE OF CONTENTS

01	A Center for Regenerative Building Winter 2024 Spring 2024
02	Recreating the Fabric of Lower Parel, Mumbai M.Arch Thesis 2024-2025
03	Airport Hotel Semester 09
04	Urban Harmony Fall 2024
05	Technical Drawings Selected Works
06	Professional Practice Internship

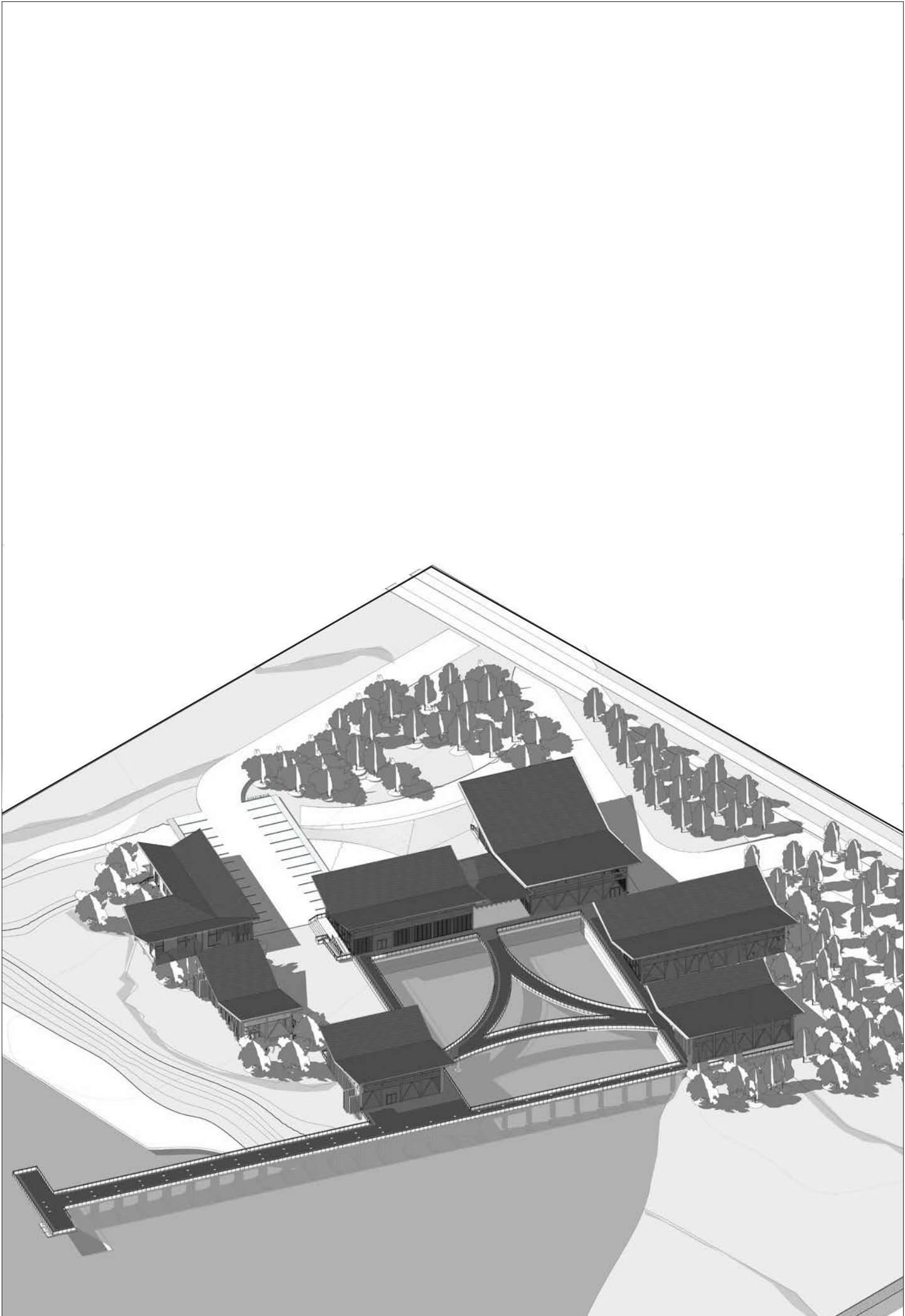
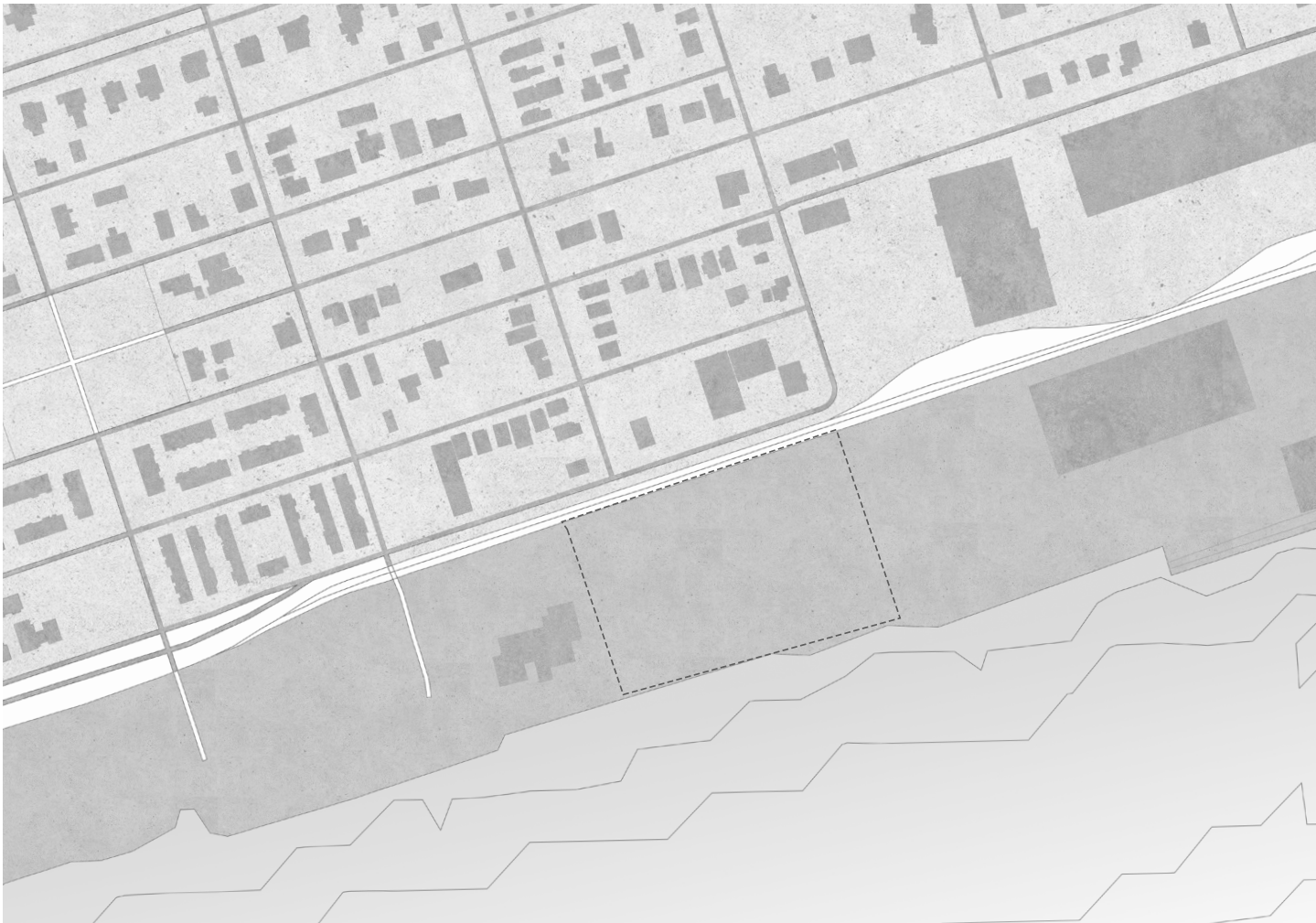
A CENTRE FOR REGENERATIVE BUILDING

Brunswick, GA

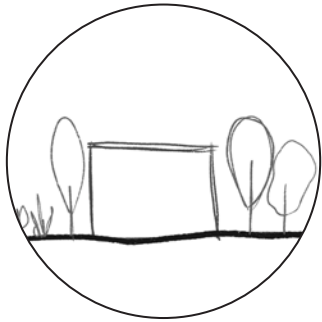
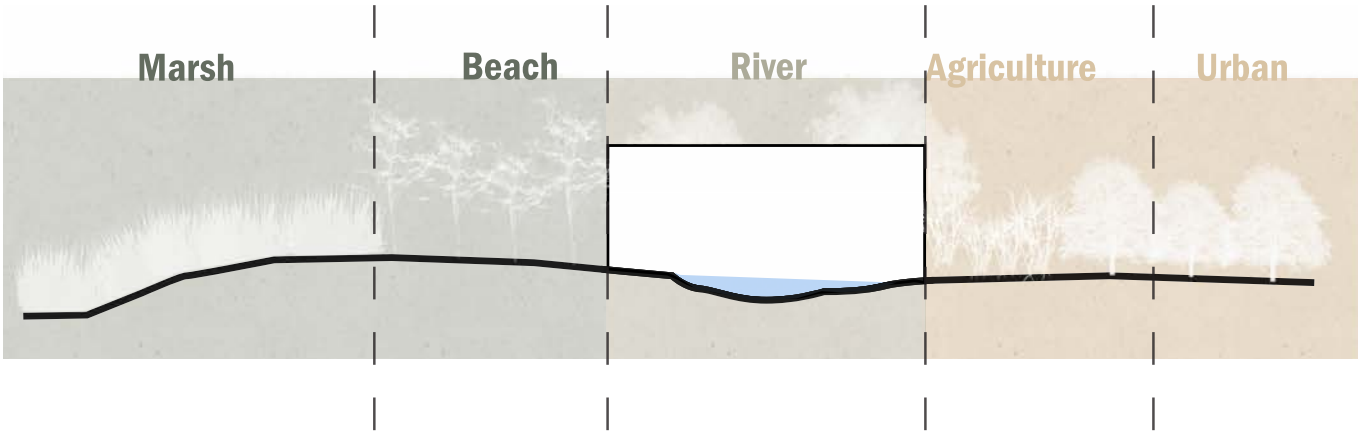
Location :Brunswick, GA
Year: Winter 2024 | Spring 2023
Project type: Industrial
Area: 21000 sq.ft.

This project transforms an ecologically barren brownfield in Brunswick, GA into a regenerative recycling center that re-stores the local ecosystem and empowers the community. By using reclaimed construction materials and recycling plastic

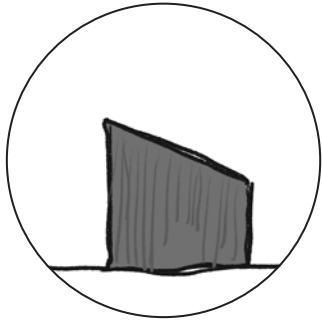
waste into useful daily items, the center fosters a culture of sustainability, community interdependence, and environmental stewardship.



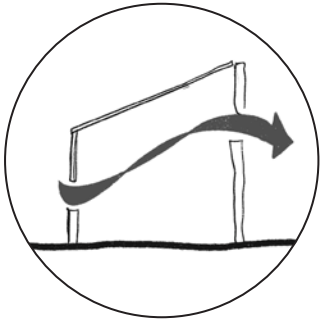
HOW CAN DESIGN **REVIVE** A BARREN SITE **INTO A THRIVING, SUSTAINABLE COMMUNITY HUB?**



Ecological Harmony
Integrating the nature to embrace the essence of the site



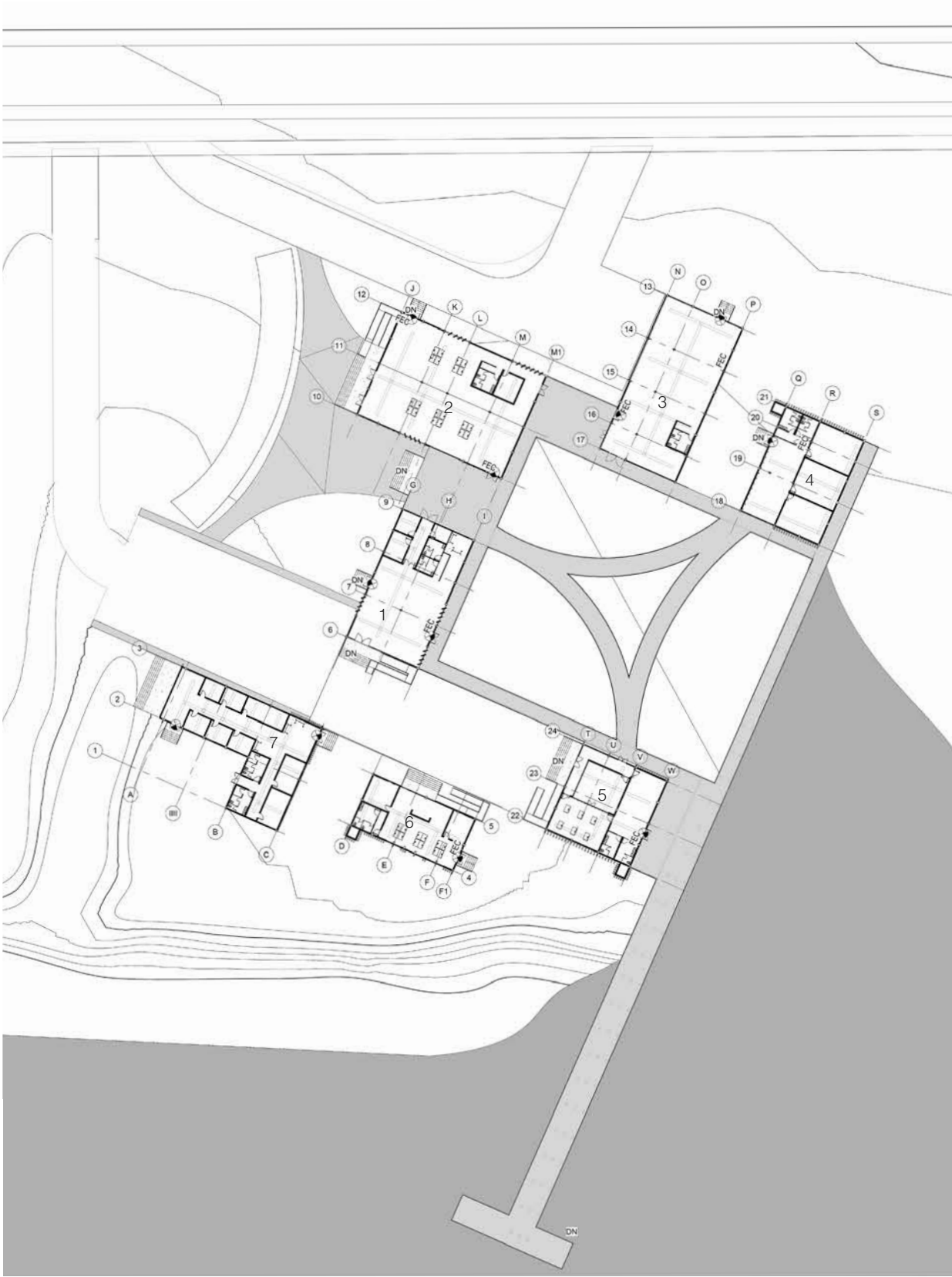
Circular construction
Use reclaimed construction materials



Thermal comfort
Mechanical ventilations systems were implemented.

By studying the site's diverse landscapes, I designed to reconnect these ecological layers, integrate native systems, shape forms for light and airflow, and weave community functions into a regenerative hub.

Reviving and enhancing the landscape by reintroducing native ecologies, creating a balanced connection between built and natural environments.



Site Plan

- | | | | |
|-------------|------------------|---------------|-----------|
| 1- Exchange | 3- Depot | 5- Classrooms | 7- Hostel |
| 2- Workshop | 4- Research Labs | 6- Admin | |



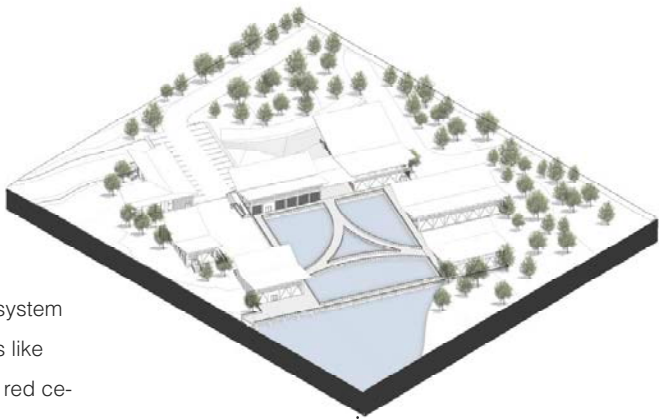
Central Plaza connecting the other buildings



Workshop Space: Plastic recycling area

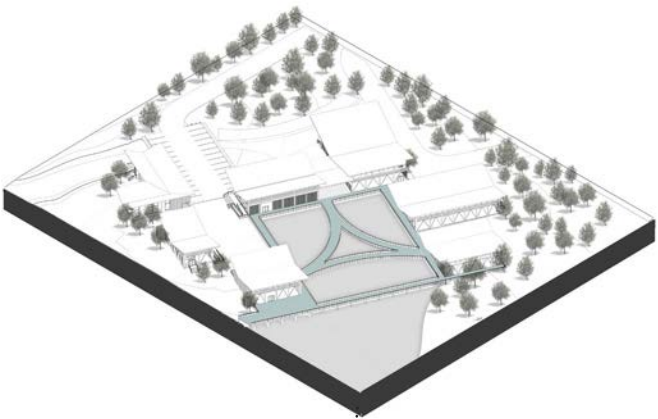
Design for Ecosystem

The project restores the local ecosystem by planting native riparian species like swamp milkweed, river birch, and red cedar to stabilize the riverbank and support diverse wildlife.



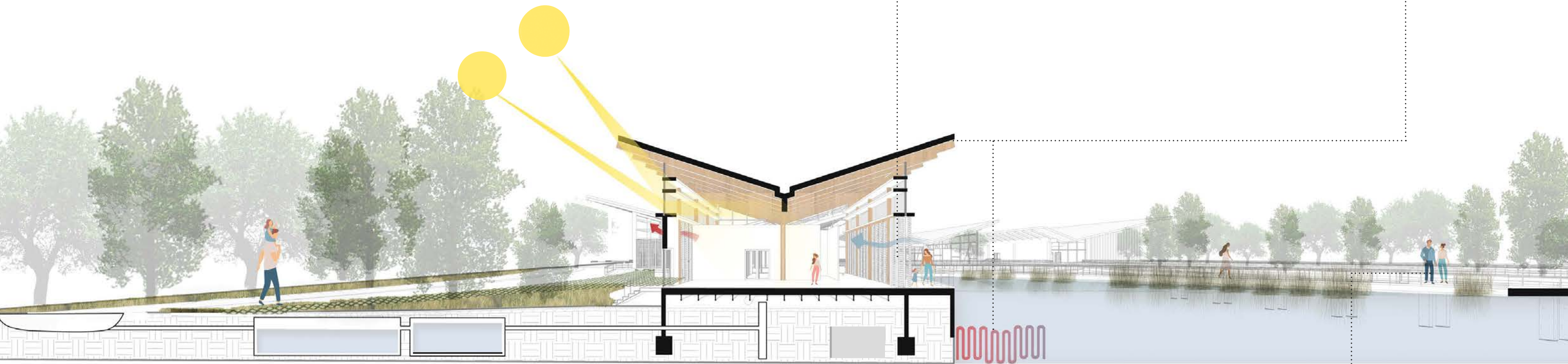
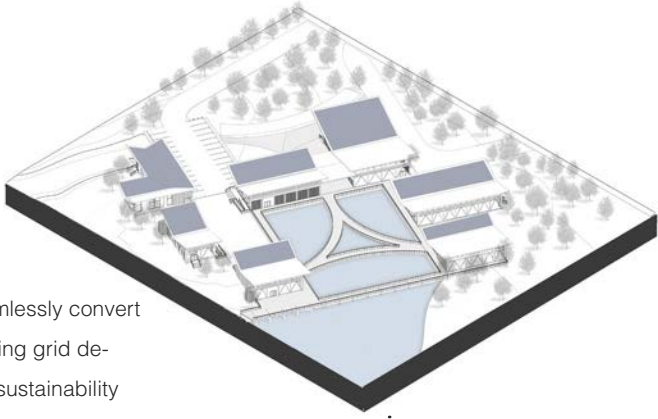
Design for Well Being

Buildings face the water to connect with nature, while open, linked spaces support the community in recycling and environmental renewal.



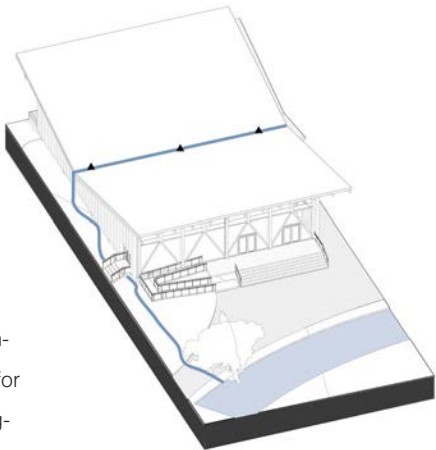
Design for Energy

Ultra-thin solar panels seamlessly convert sunlight into energy, reducing grid dependence and enhancing sustainability through lightweight, efficient design.



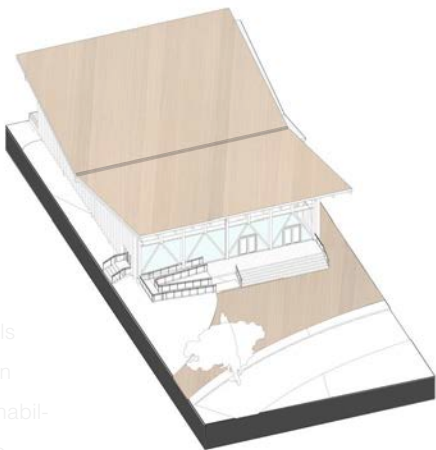
Design for Water

A butterfly roof efficiently harvests rainwater, channeling it to a central point for reuse in irrigation and supporting long-term sustainability.



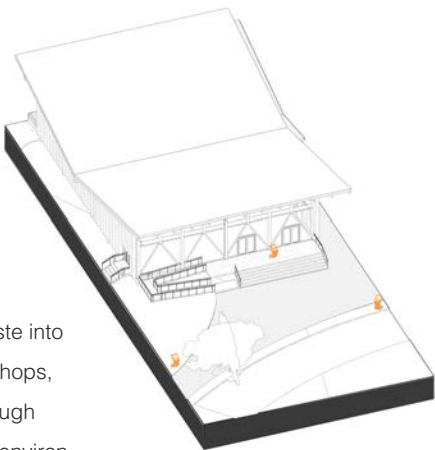
Design for Resources

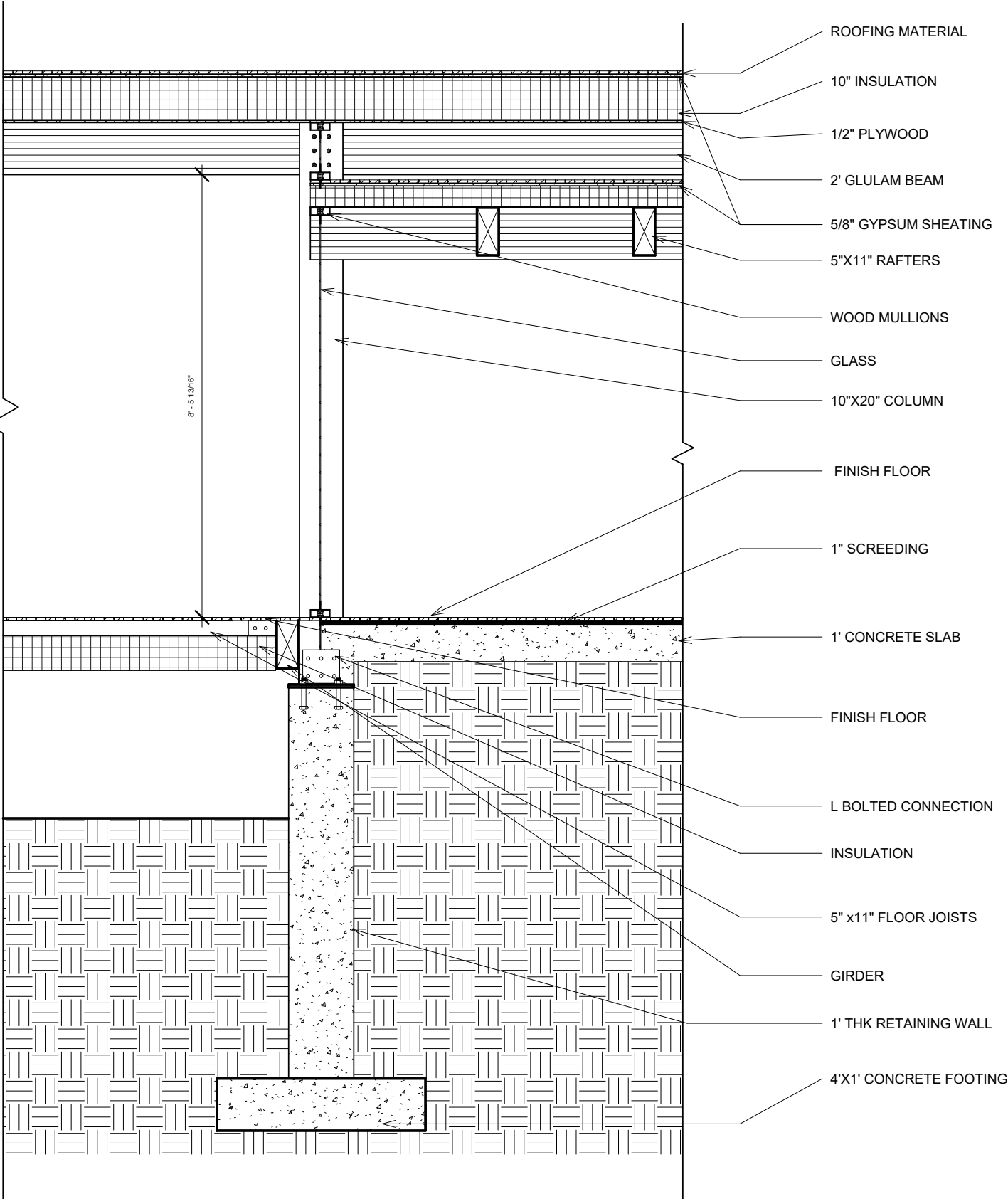
Locally sourced, low-carbon materials and a flexible, energy-efficient design support reuse, recycling, and sustainability throughout the building's life cycle.



Design for Equitable Communities

The facility transforms plastic waste into furniture, offers 3D printing workshops, and engages the community through educational activities to promote environmental responsibility.





Construction Detail



RE-CRAFTING THE FABRIC FOR LOWER PAREL, MUMBAI

Lower parel,Mumbai
M.Arch thesis

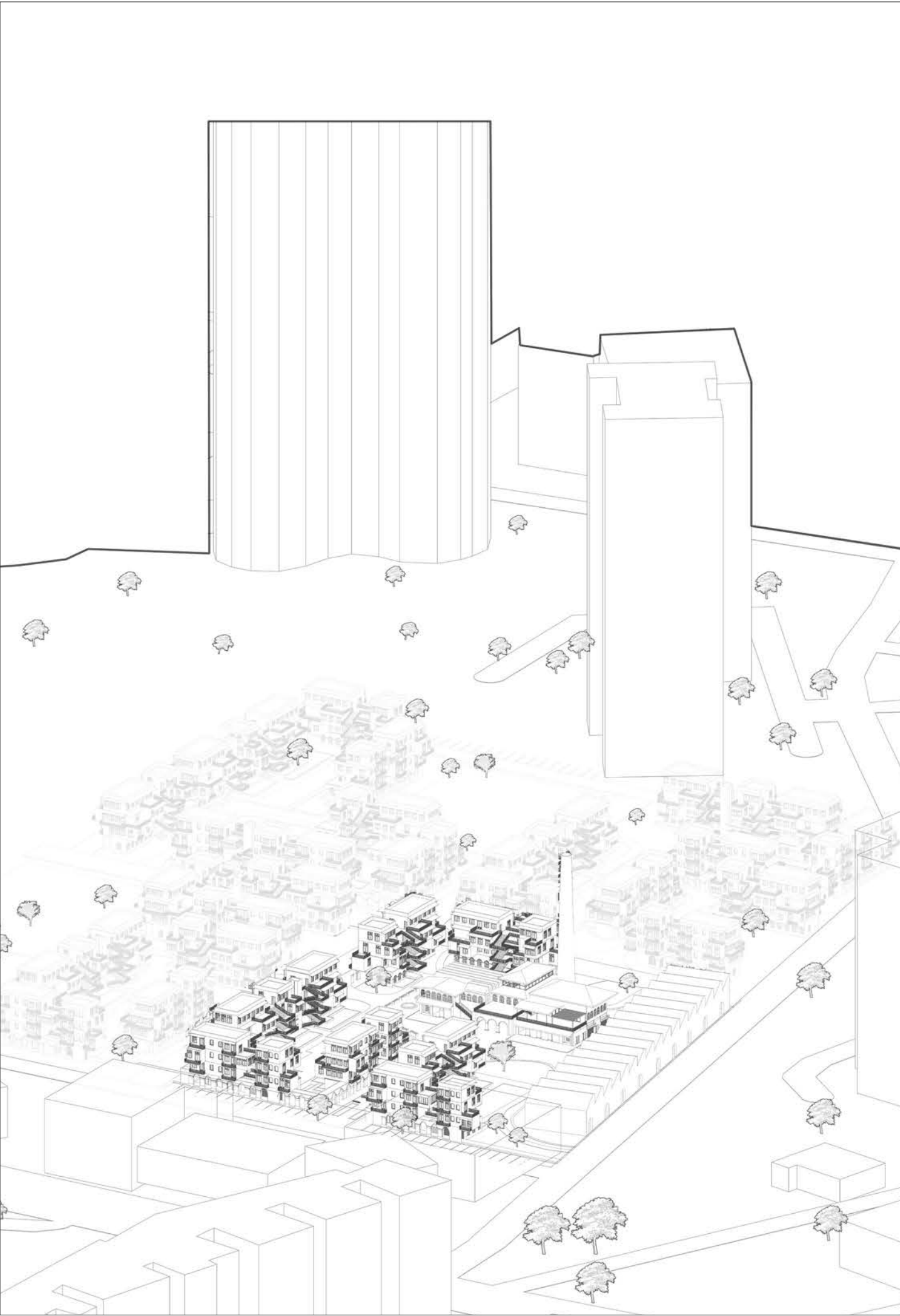
Location : Lower Parel
Year: 2024-2025
Project type: Mixed Use
Area: 1 Acre



Location Plan

- 1- Site
- 2- B.D.D Chawls

The thesis addresses the cultural erasure in Mumbai’s Lower Parel, where high-rises have replaced communal spaces and disconnected people from street life and history. It proposes a low-rise modular housing system that revives courtyards, balconies, and shared spaces, reuses an abandoned mill as a cultural center and market, and restores identity through locally inspired materials and public gathering areas—reconnecting the city to its past.

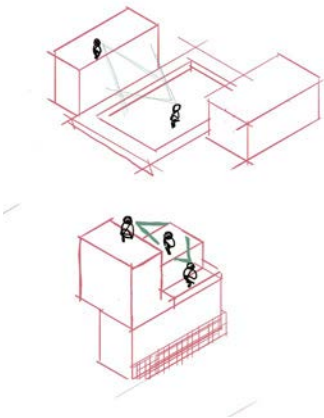


HOW CAN DESIGN REVIVE THE LOST **INTIMACY** OF MUMBAI'S STREET LIFE?

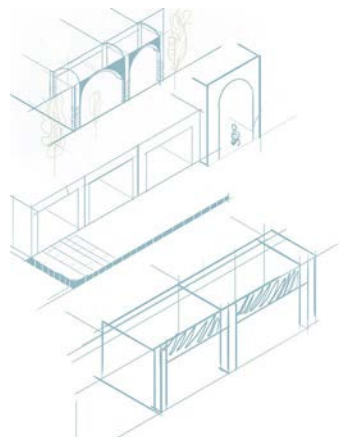


Concept

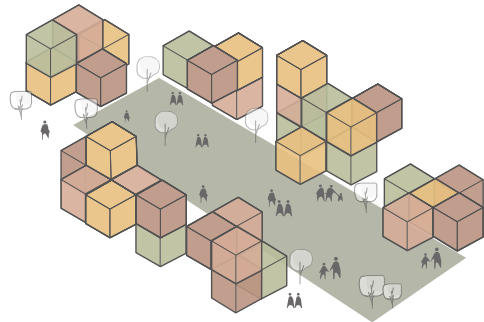
The design began with a single unit—open, breathable, and rooted in daily life. In Mumbai, homes spill into shared spaces, so balconies and thresholds invite connection. From these lived moments, the site grew outward—shaped by relationships, culture, and the city’s instinct to live together.



Social Connections — Courtyard Views



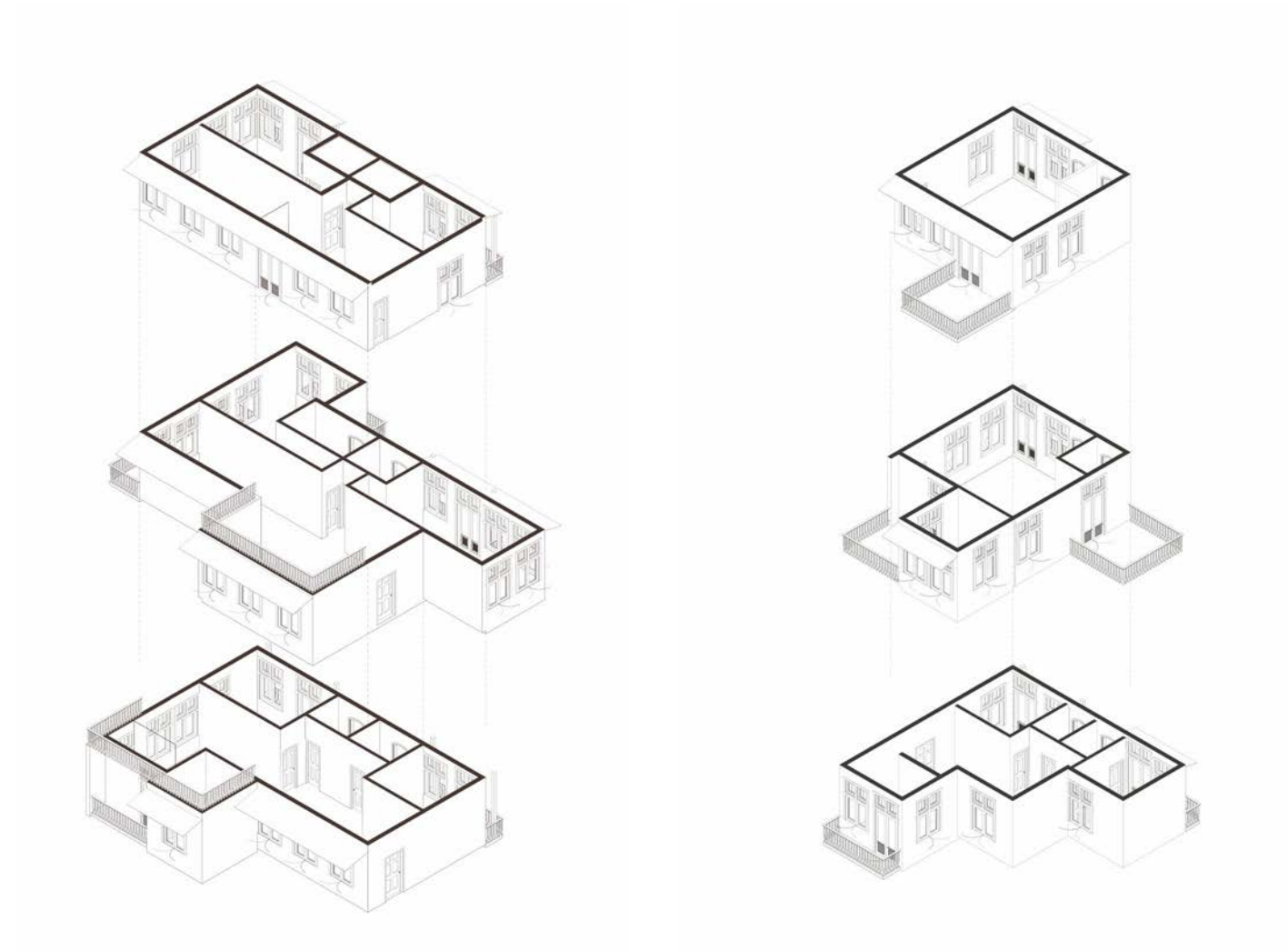
Facade Study — Porous Edges



Cluster Formation



Units & Masterplan



Units combine into intimate clusters that grow into a masterplan focused on reviving Mumbai's lost street life and social connections. Together, they recreate a vibrant neighborhood fabric that celebrates shared spaces, everyday encounters, and community identity.





Facade Detail

The facade reclaims Mumbai’s lost architectural language by using brick and plaster instead of generic glass, echoing the warmth and texture of traditional neighborhoods. Projected chhajjas and balconies not only protect from rain and sun but create layered spaces that encourage everyday interactions and connect people to the street below — reviving the city’s vibrant social life.



Central Courtyard and Cluster



Cultural Centre

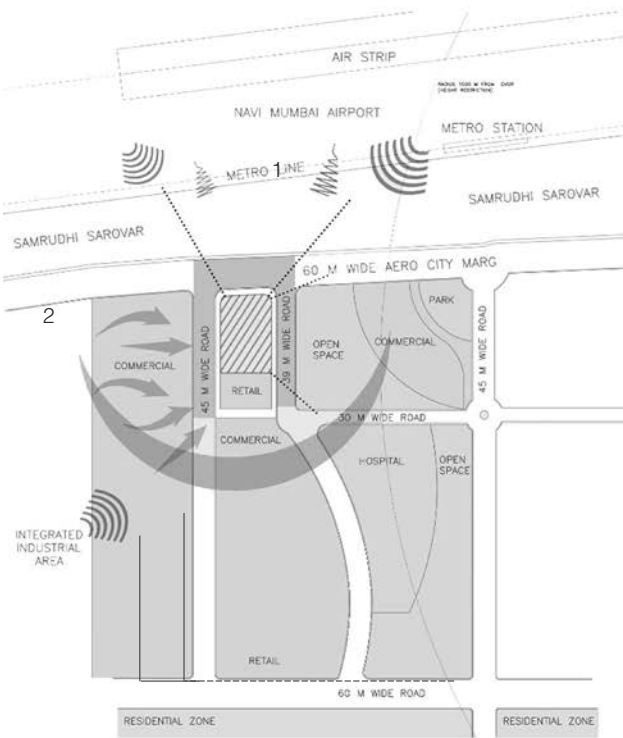


Cultural Centre

AIRPORT HOTEL

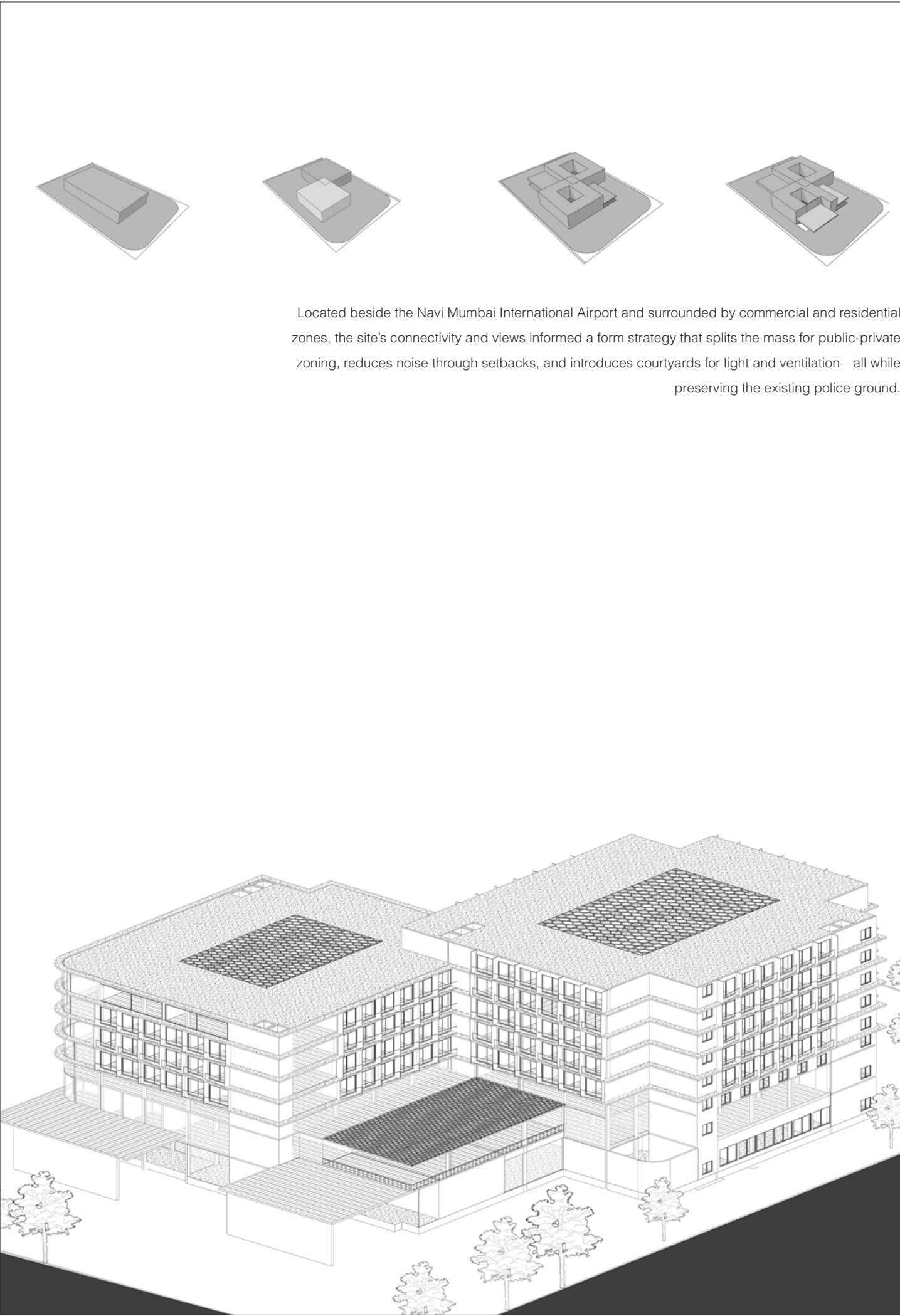
Navi Mumbai
Semester 09

Location : Navi Mumbai
Year: 2021
Project type: Hospitality
Area: 7000 sq.m.

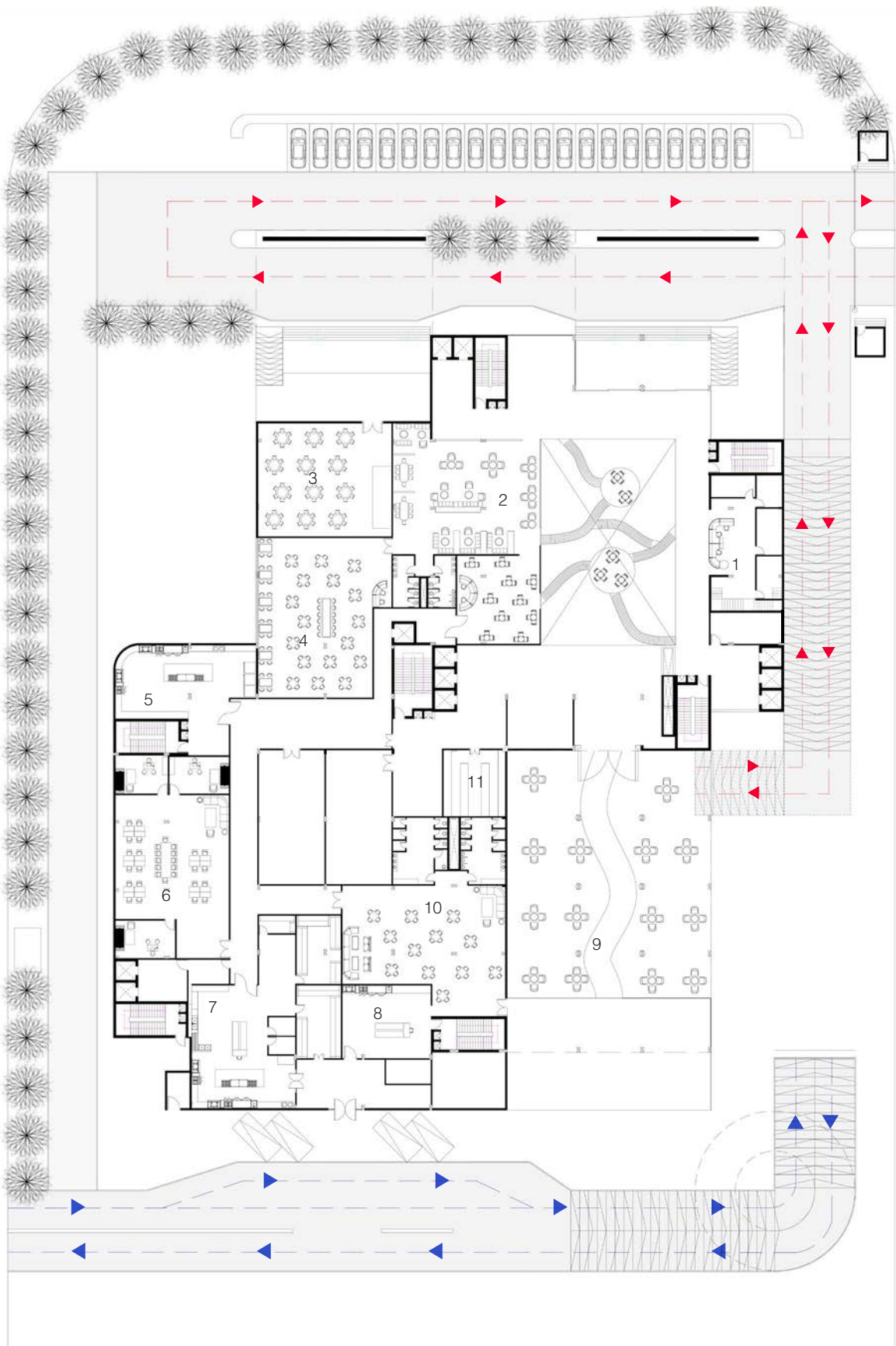


Location Plan

The Brief was to design an Airport Hotel in aero-city situated in Navi Mumbai. The project includes several amenities such as ballroom, gymnasium, different types of restaurants, business zones along with various types of hotel rooms and ancillary activities,



Located beside the Navi Mumbai International Airport and surrounded by commercial and residential zones, the site's connectivity and views informed a form strategy that splits the mass for public-private zoning, reduces noise through setbacks, and introduces courtyards for light and ventilation—all while preserving the existing police ground.



Site Plan

- | | | | | | |
|---------|------------|----------------------|------------|------------------------|--------------|
| 1- FOH | 3-Cafe | 5- Satellite Kitchen | 7- Kitchen | 9- Service Entry | 11- Luggage |
| 2- Cafe | 4- Banquet | 6- BOH | 8- Kitchen | 10- Staff Resting Area | Storage Area |

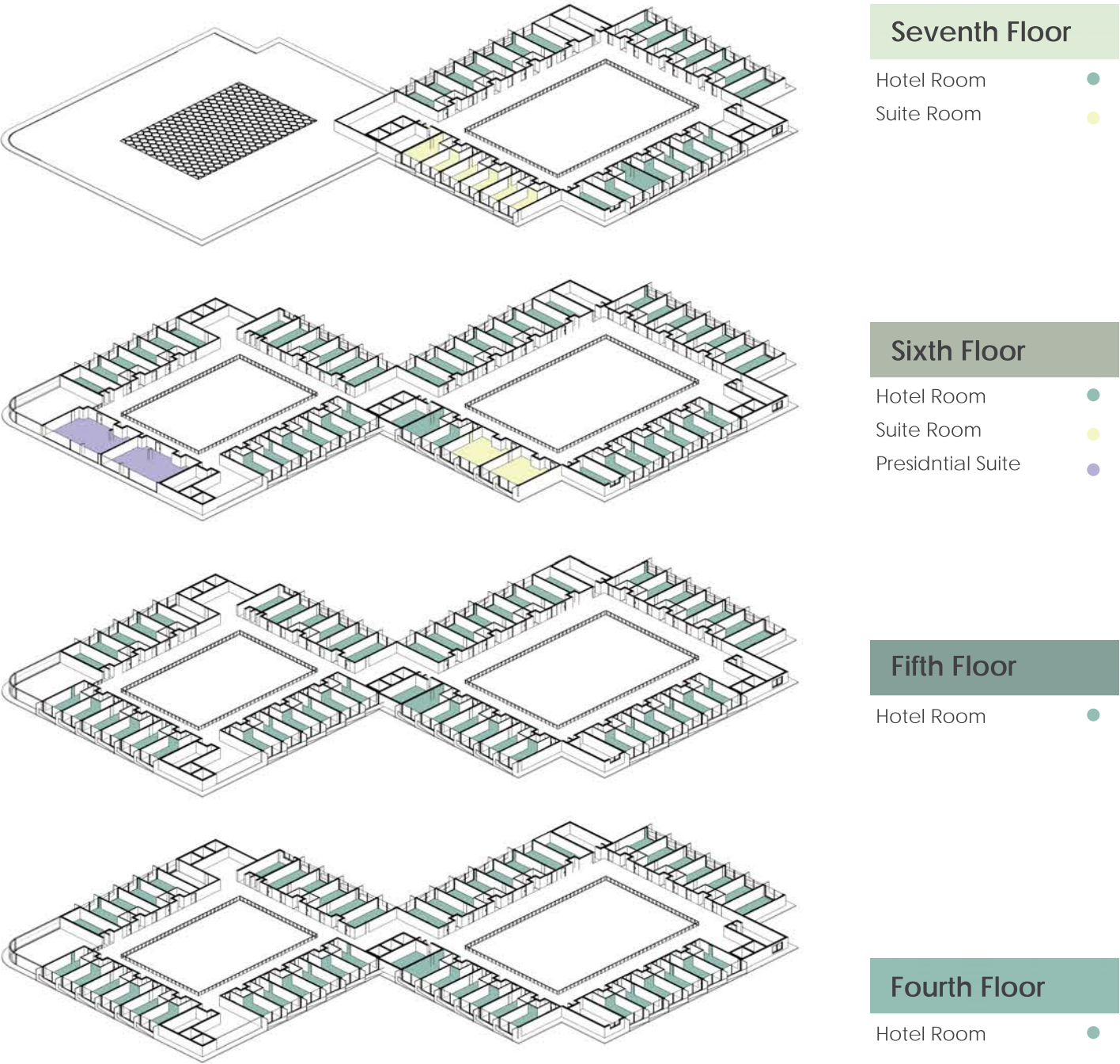
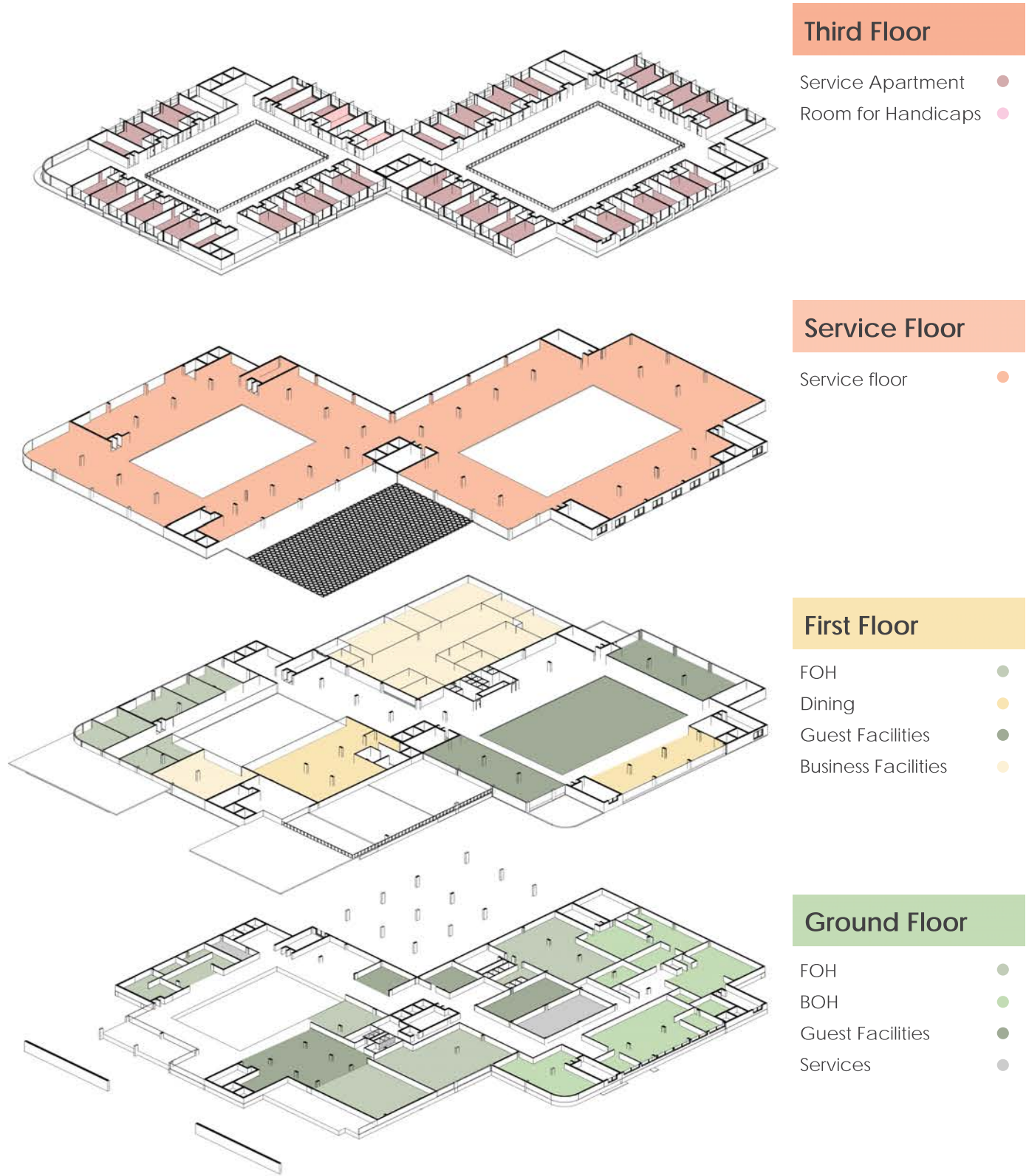


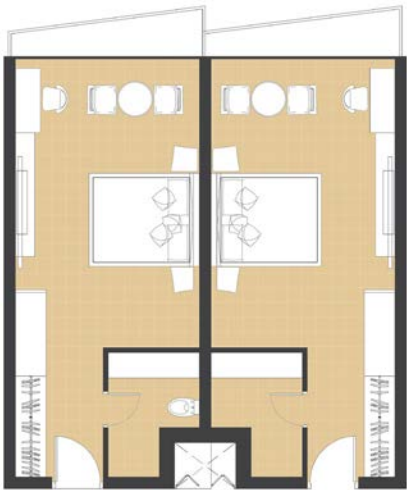
Hotel Room- Suite



Hotel Entrance- Drop off

The design began with a single unit—open, breathable, and rooted in daily life. In Mumbai, homes spill into shared spaces, so balconies and thresholds invite connection. From these lived moments, the site grew outward—shaped by relationships, culture, and the city's instinct to live together.





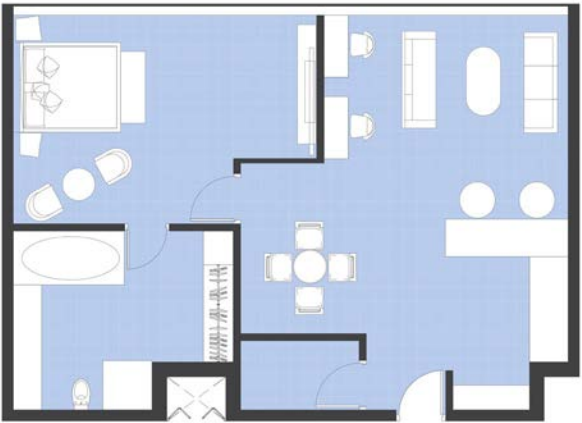
Room



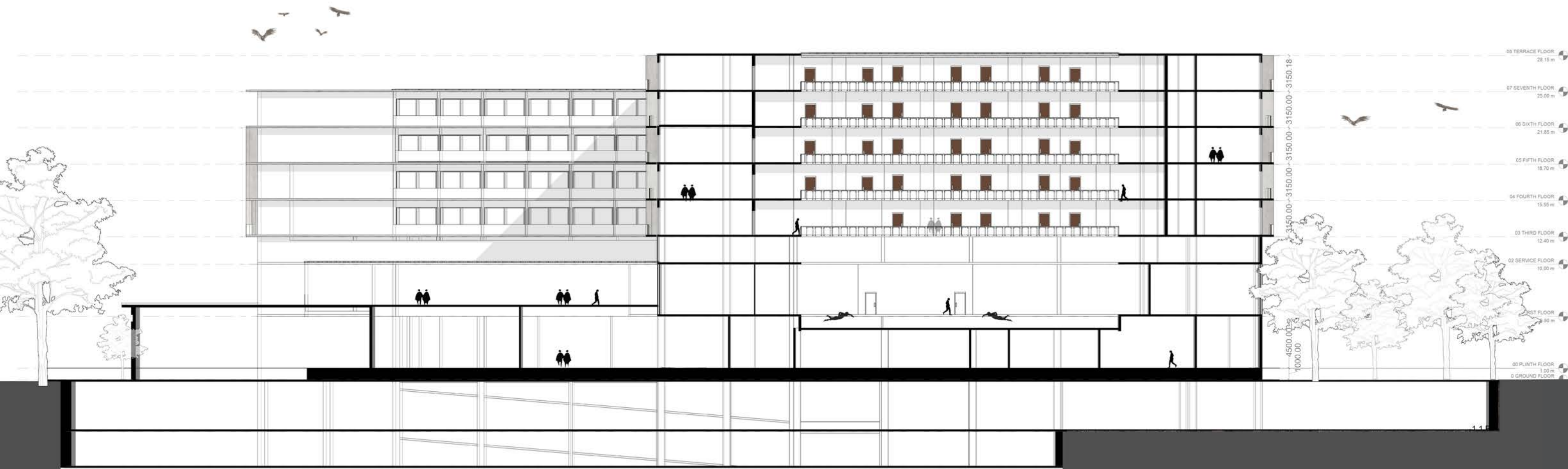
Service Apartment



Suites



Presidential Suites



URBAN HARMONY

Carver Heights, GA
Fall 2023

Location : Carver Heights, GA
Year: Fall 2023
Project type: Urban Design

Landuse Map



- Residential
- Mixed Use
- Commercial
- Open space

Unusable open spaces



The diagram shows that all the amenities are place within 2-5 minutes of walking distance

Services

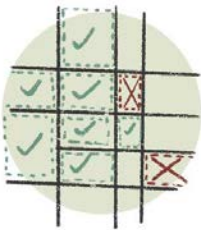


- Major Roads
- Arterial Roads

Located west of historic downtown Savannah, the site offers a unique opportunity to blend modern functionality with the cultural heritage of Carver Heights and the Enmarket Arena. Its historic context serves as a cultural anchor, allowing for urban planning that honors the past while envisioning a dynamic future—creating a space that reflects Savannah's vibrant energy and rich legacy.



Strength



Land Availability



Historic buildings and existing buildings

Weakness



Lack of Services



Unusable open spaces

Opportunities

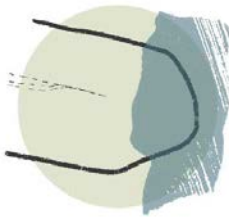


More road networks leading to increase in revenue



Mobile city-Township and Urban Activities

Threat



Flooding Zone



Destruction of historic spaces



- Residential
- Mixed Use
- Commercial
- Open space



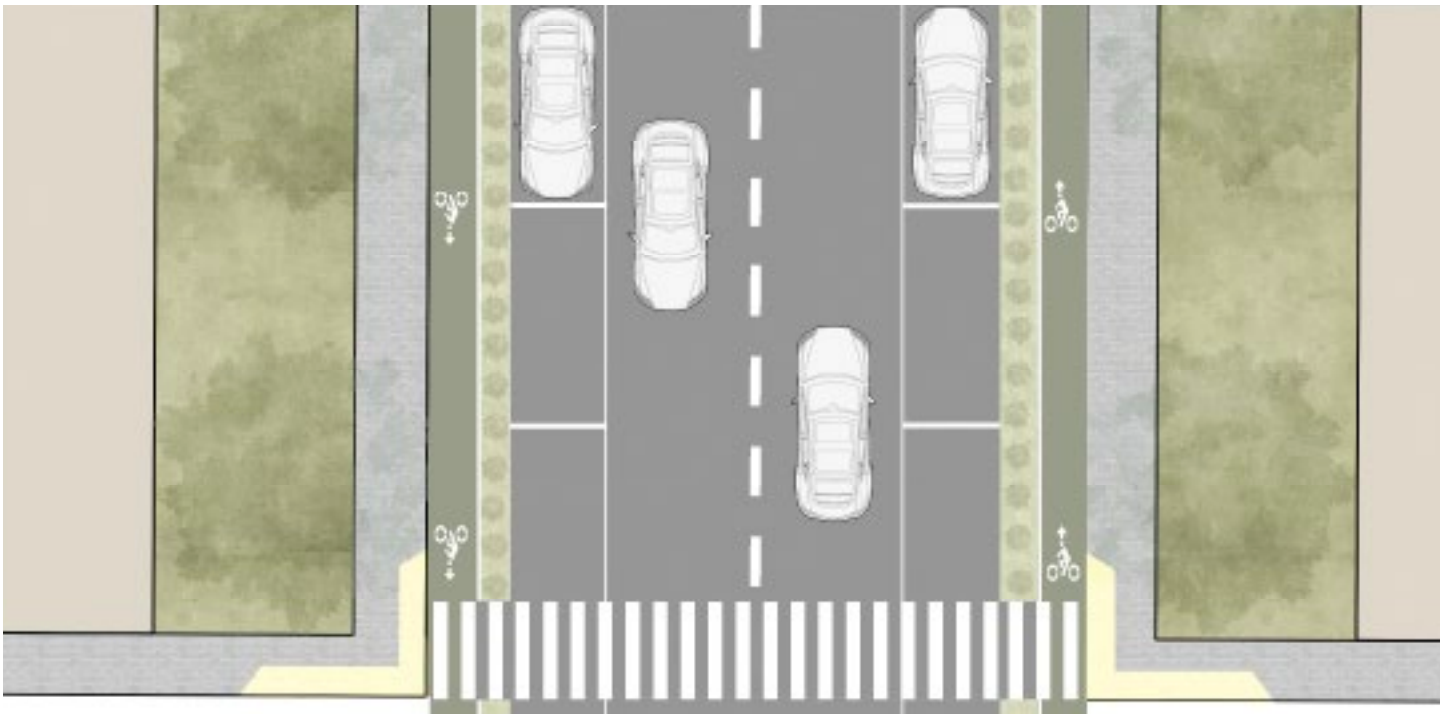
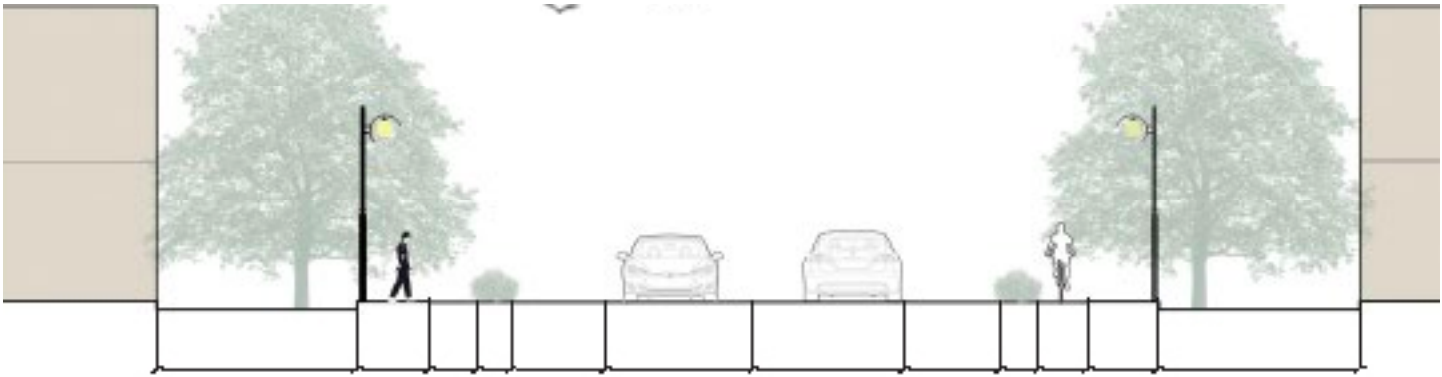
The diagram shows that all the amenities are place within 2-5 minutes of walking distance



- Major Roads
- Arterial Roads

Using Kevin Lynch's lens, we shaped clear paths, softened edges, and distinct districts to make the site instantly legible. Nodes—a central plaza and workshop deck—anchor community life, while landmarks tie the project to Savannah's heritage.

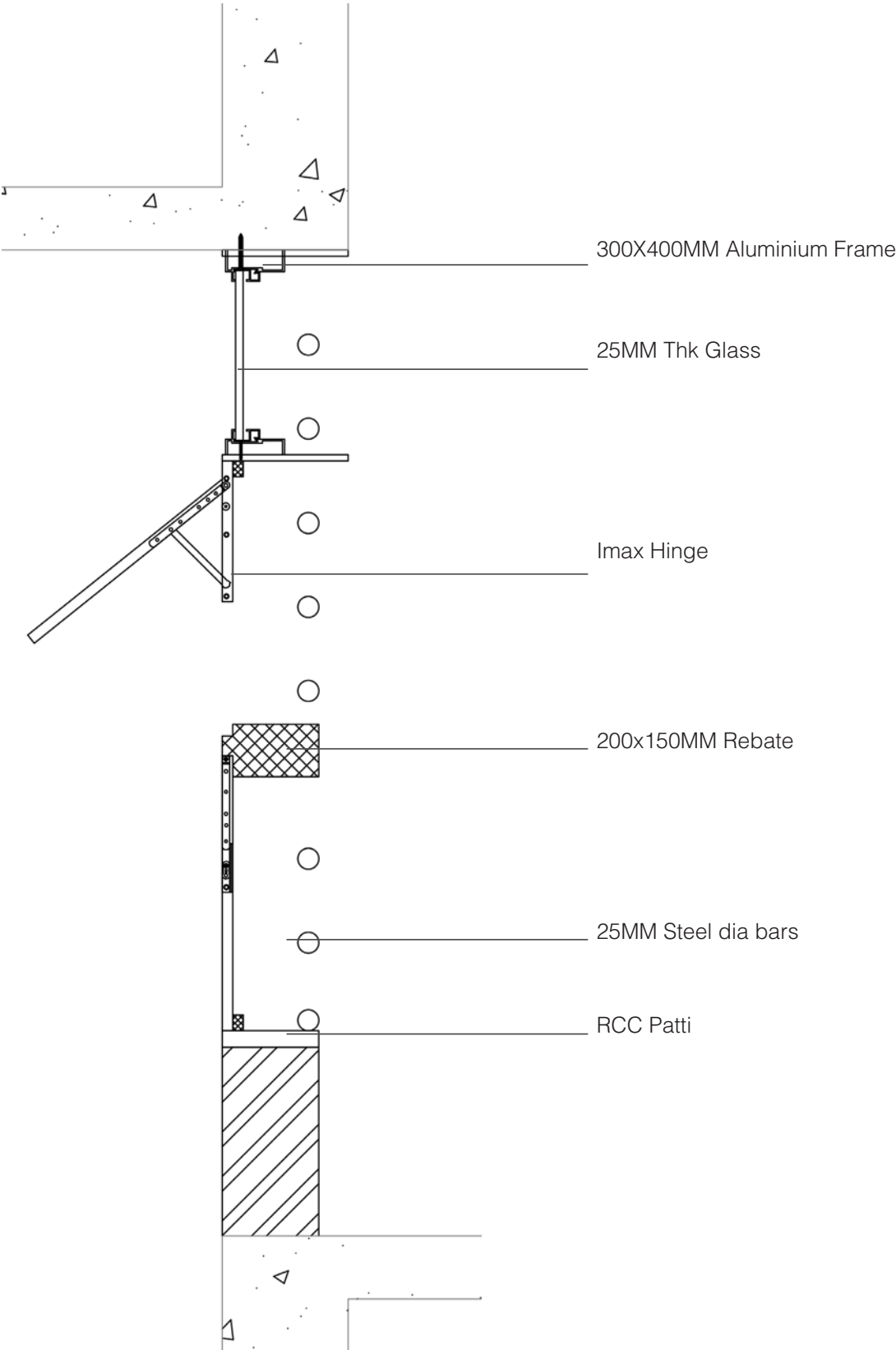
This structure, guided by a SWOT-driven brief, turns weaknesses into walkable, green opportunities and unites past and future in one cohesive plan.

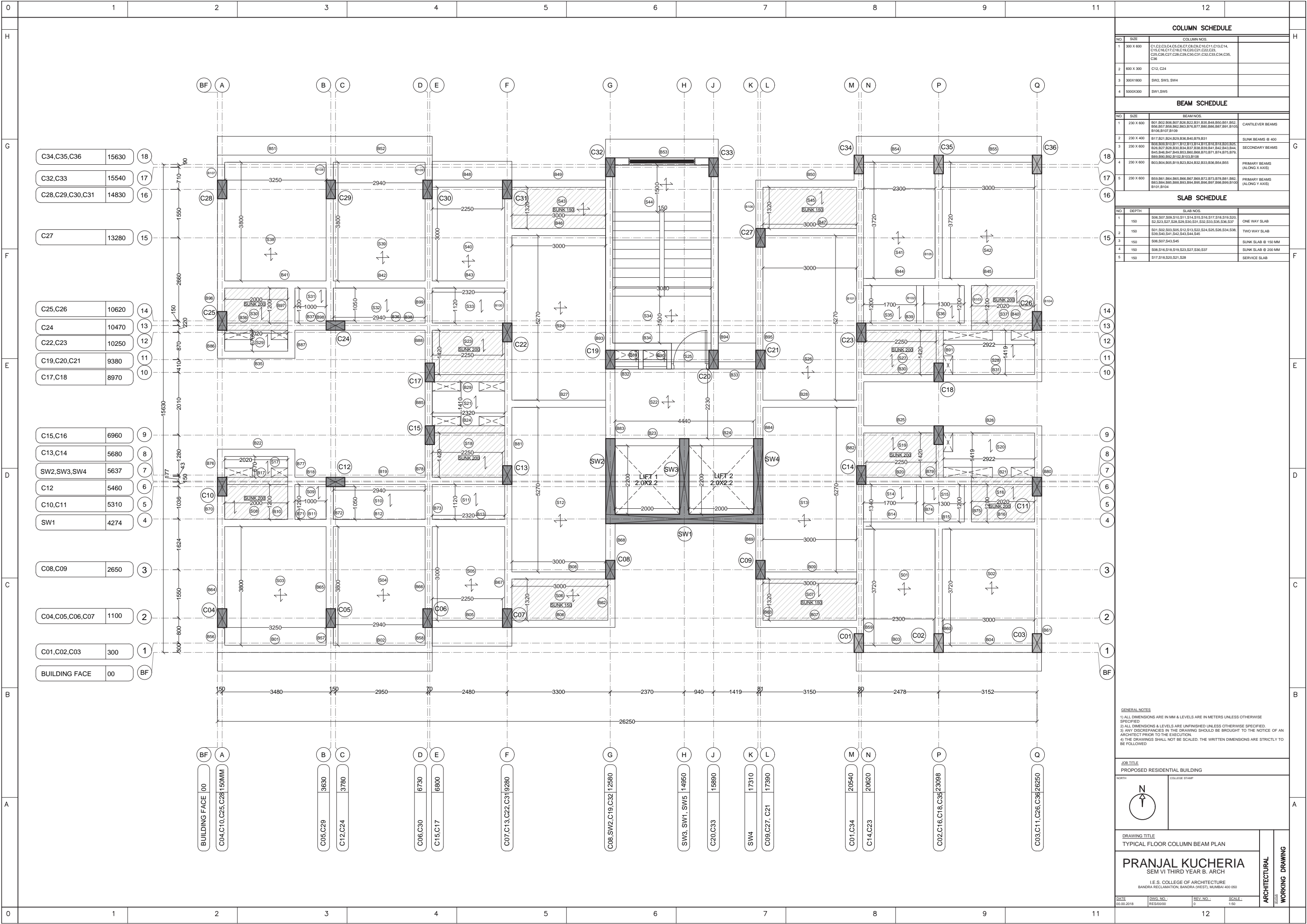


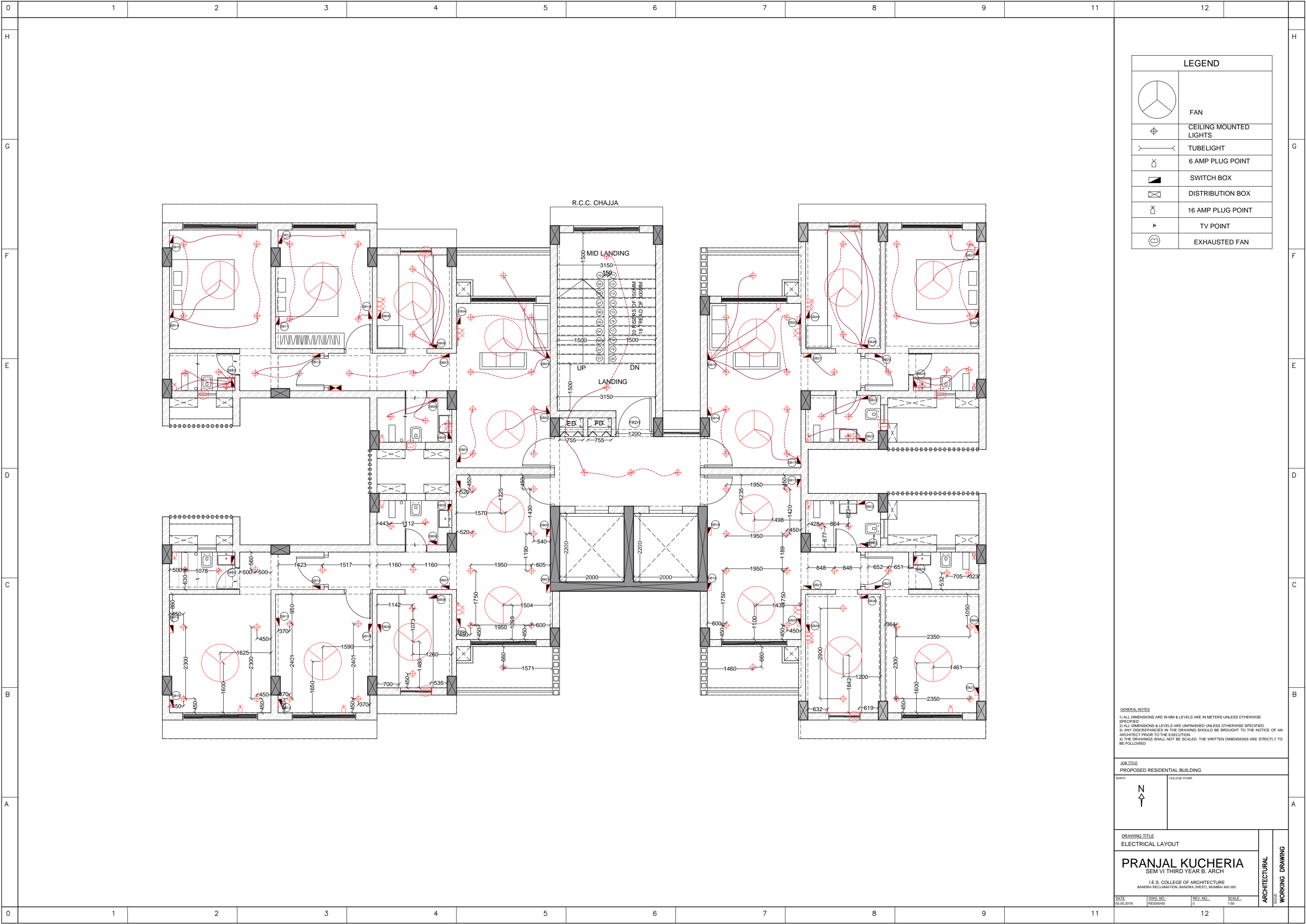
TECHNICAL DRAWINGS

Construction documents

A comprehensive collection of construction drawings developed across various projects and design explorations. It highlights a progression of technical skills, attention to detail, and the ability to translate conceptual designs into precise, buildable documents. The drawings encompass a range of building types and scales, showcasing expertise in structural coordination, material articulation, and system integration.





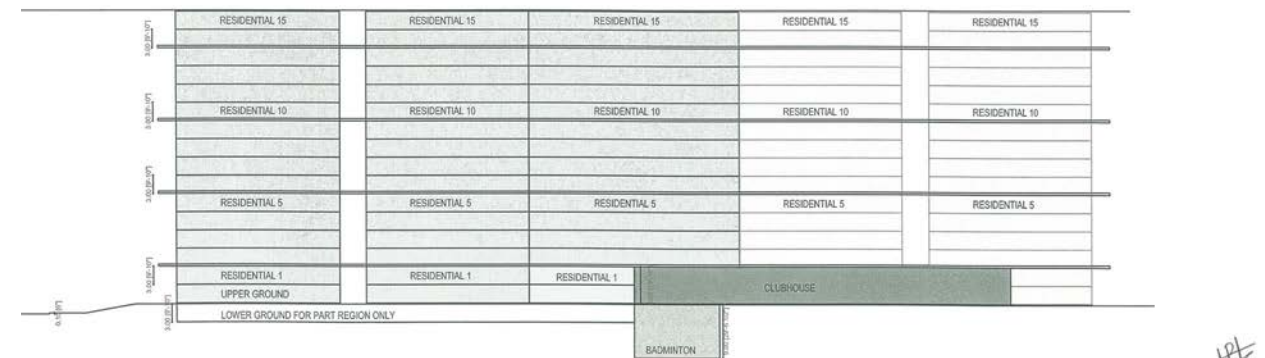
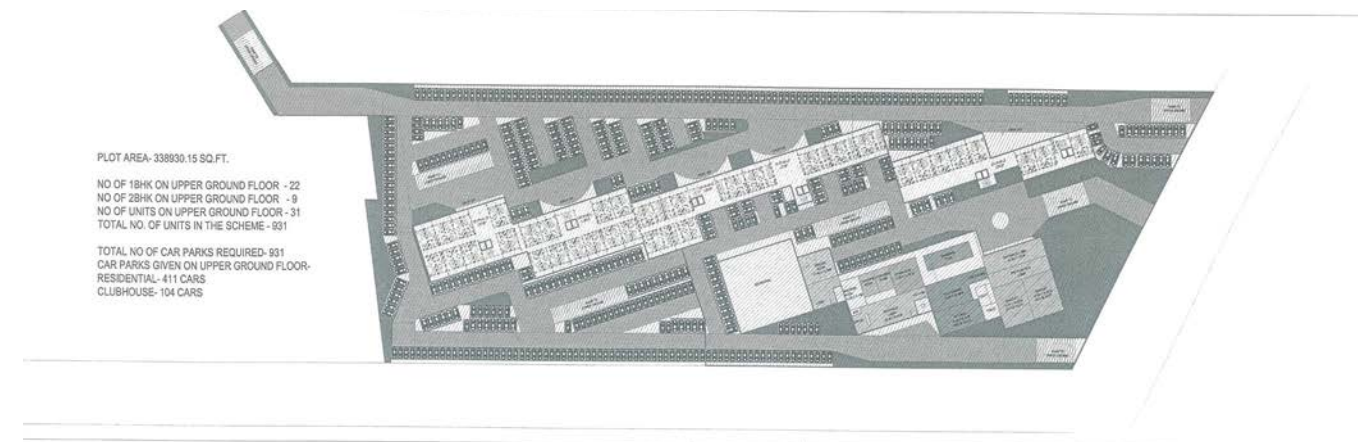
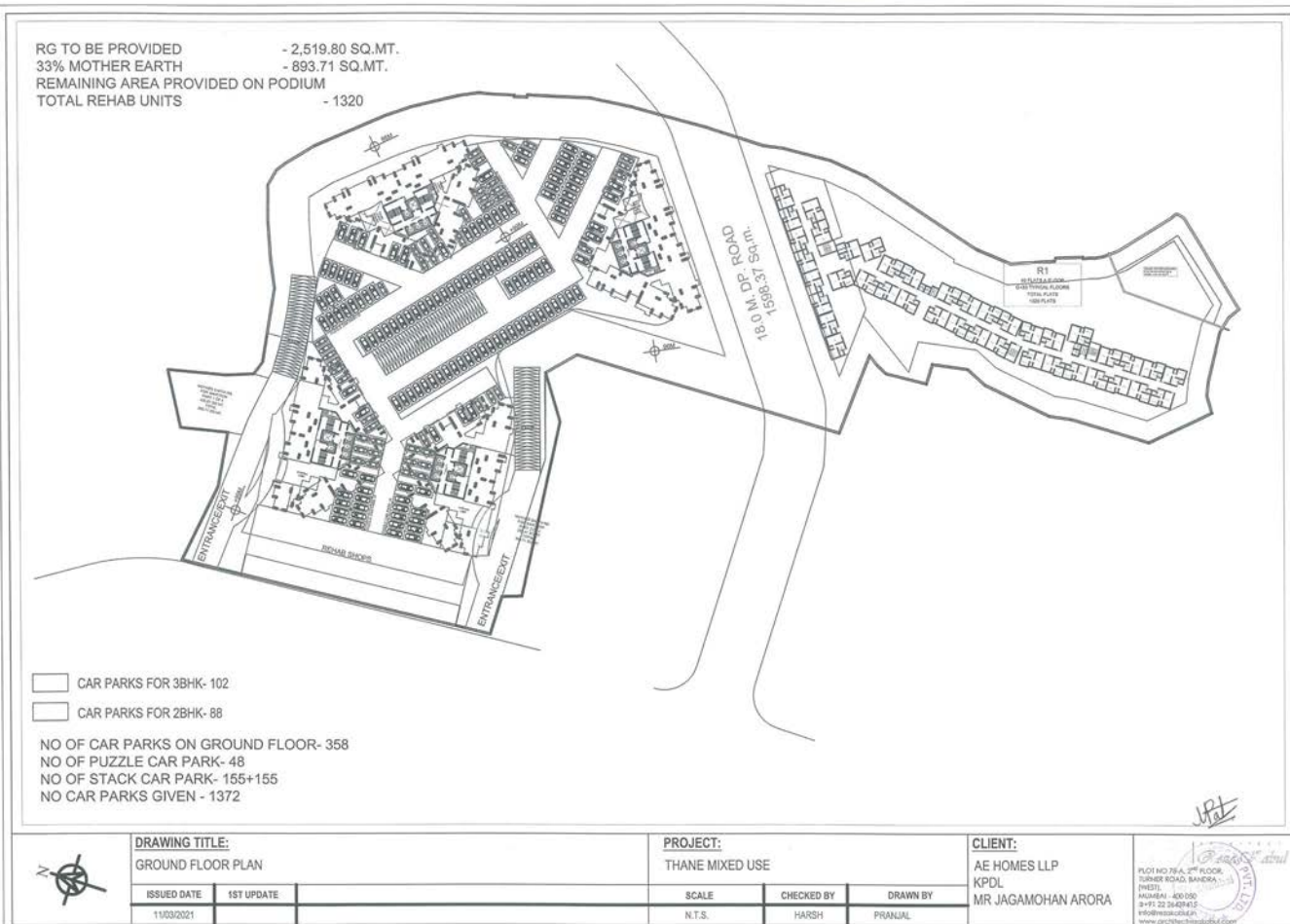


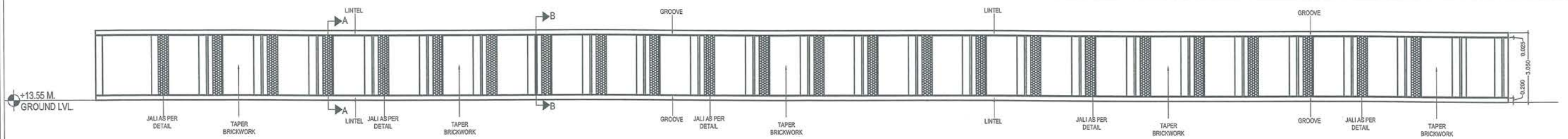
PROFESSIONAL PRACTICE

Internship / Junior Architect

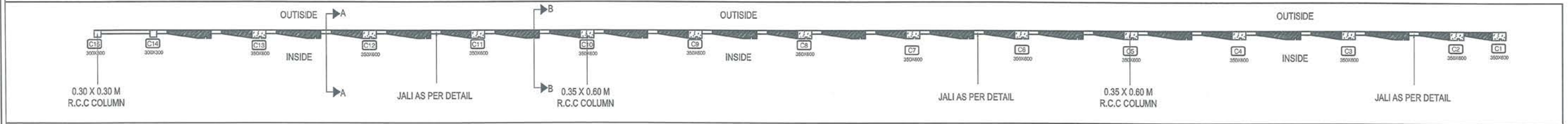
A selection of projects completed during professional internships and employment, encompassing master planning, residential, and institutional design. It reflects a breadth of experience, ranging from large-scale urban strategies to detailed architectural solutions. The projects demonstrate proficiency in conceptual development, spatial planning, and the technical detailing necessary for execution. Each contribution highlights a collaborative approach to design, integrating functionality, aesthetics, and innovation to meet project goals across diverse typologies and contexts.



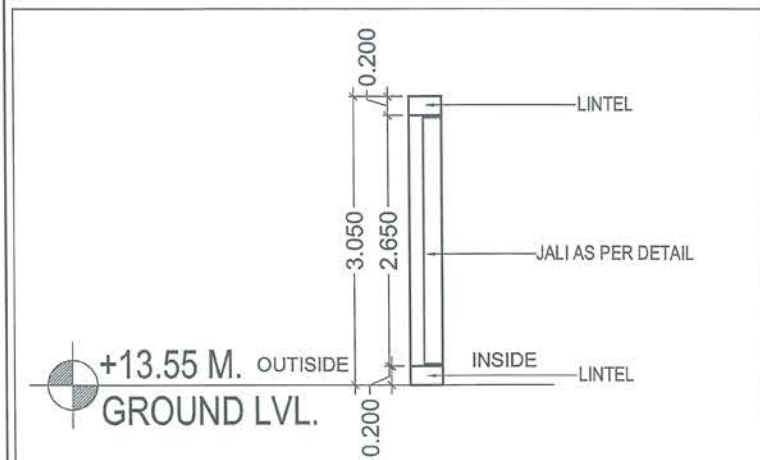




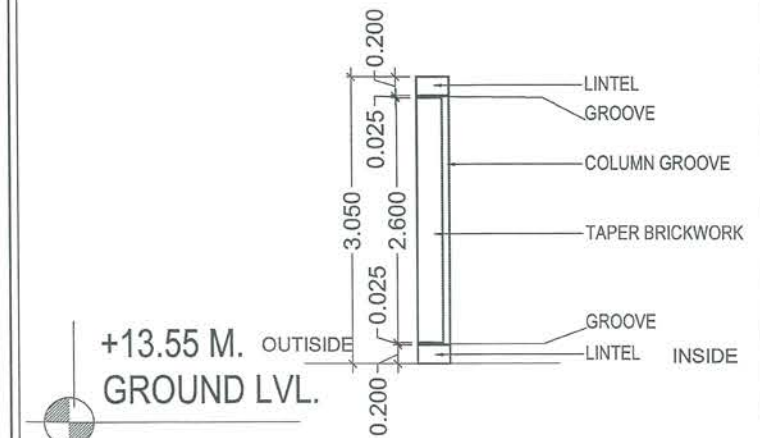
ELEVATION



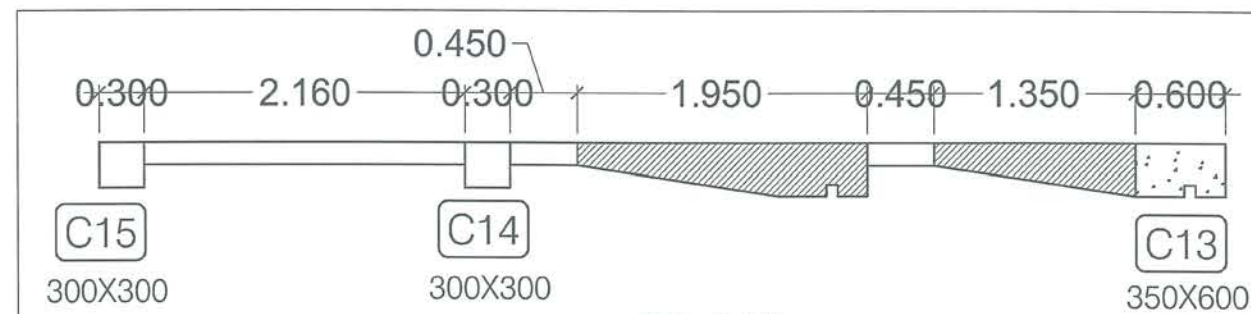
PLAN



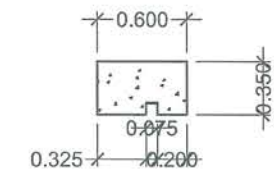
SECTION AA



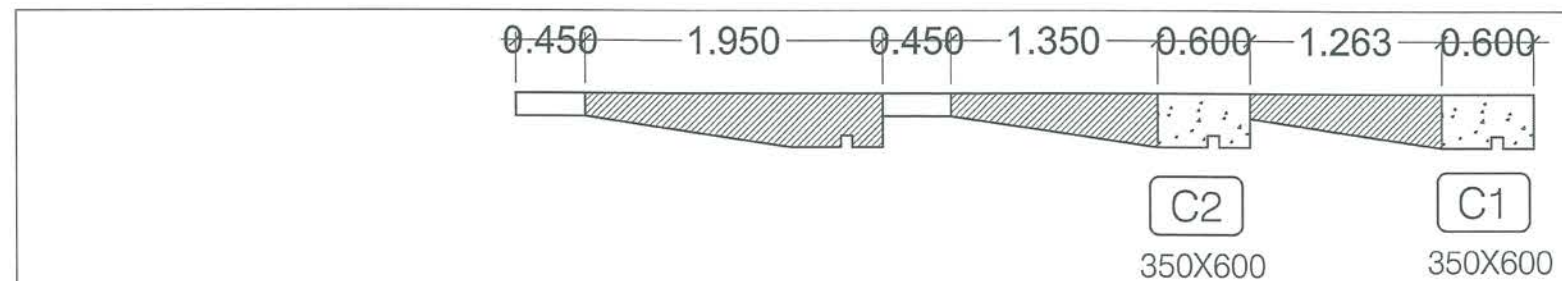
SECTION BB



PLAN



COLUMN DETAIL



PLAN



DRAWING TITLE:

CENTRELINE PLAN

ISSUED DATE

25/04/2021

1ST UPDATE

PROJECT:

REGENCY

SCALE

N.T.S.

CHECKED BY

AR. HARSH

DRAWN BY

PRANJAL

CLIENT:

AR ARCHITECT
Rosa Kabul
 PLOT NO 78-A, 2ND FLOOR,
 TURNER ROAD, BANDRA
 (WEST),
 MUMBAI - 400 050
 ☎+91 22 26439415
 info@rezakabul.in
 www.architectrezakabul.com

PRANJAL KUCHERIA

kucheriapranjal7@gmail.com | +1 912 482 4494 | Website- Pranjalkucheria.com